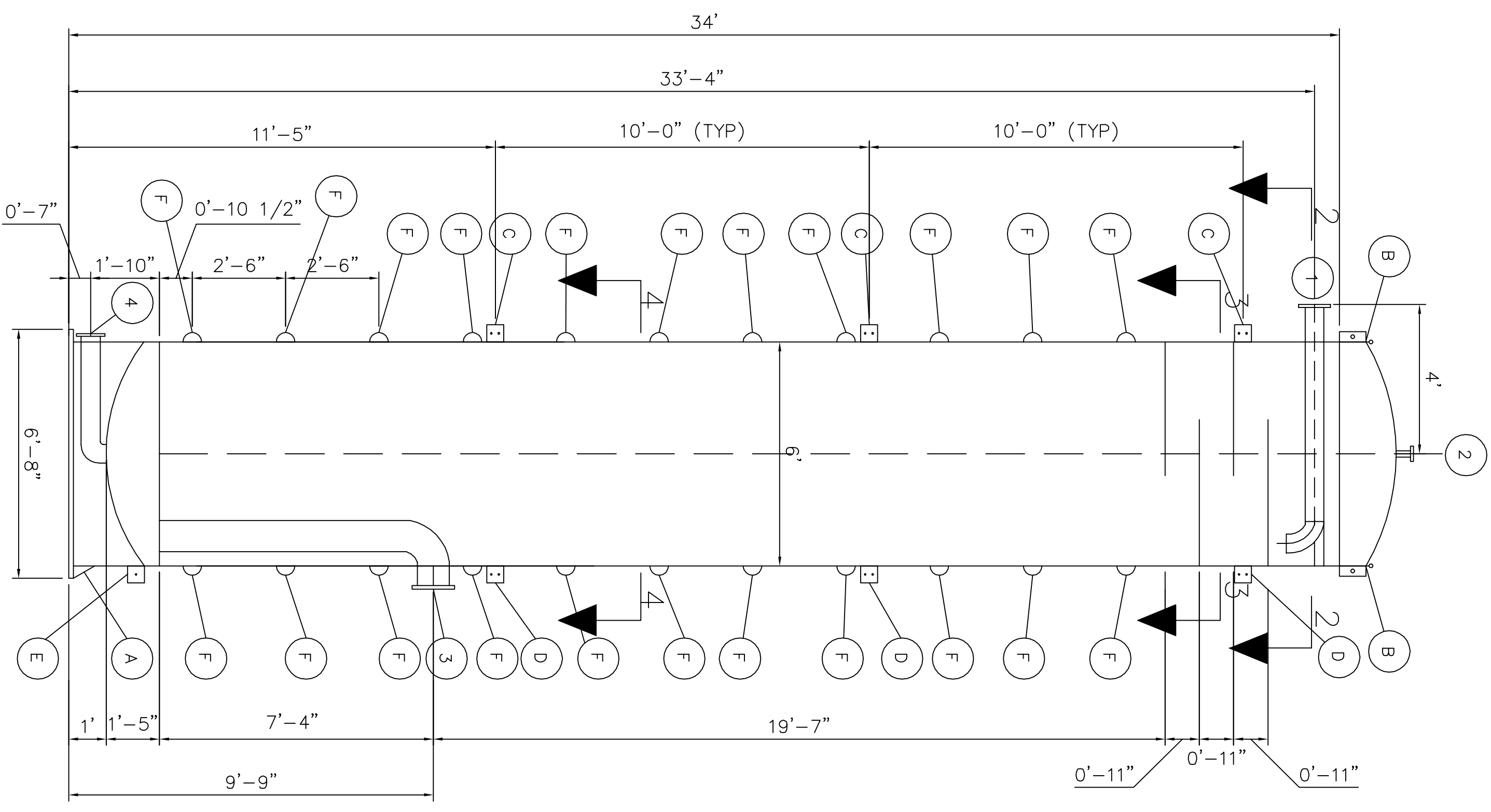
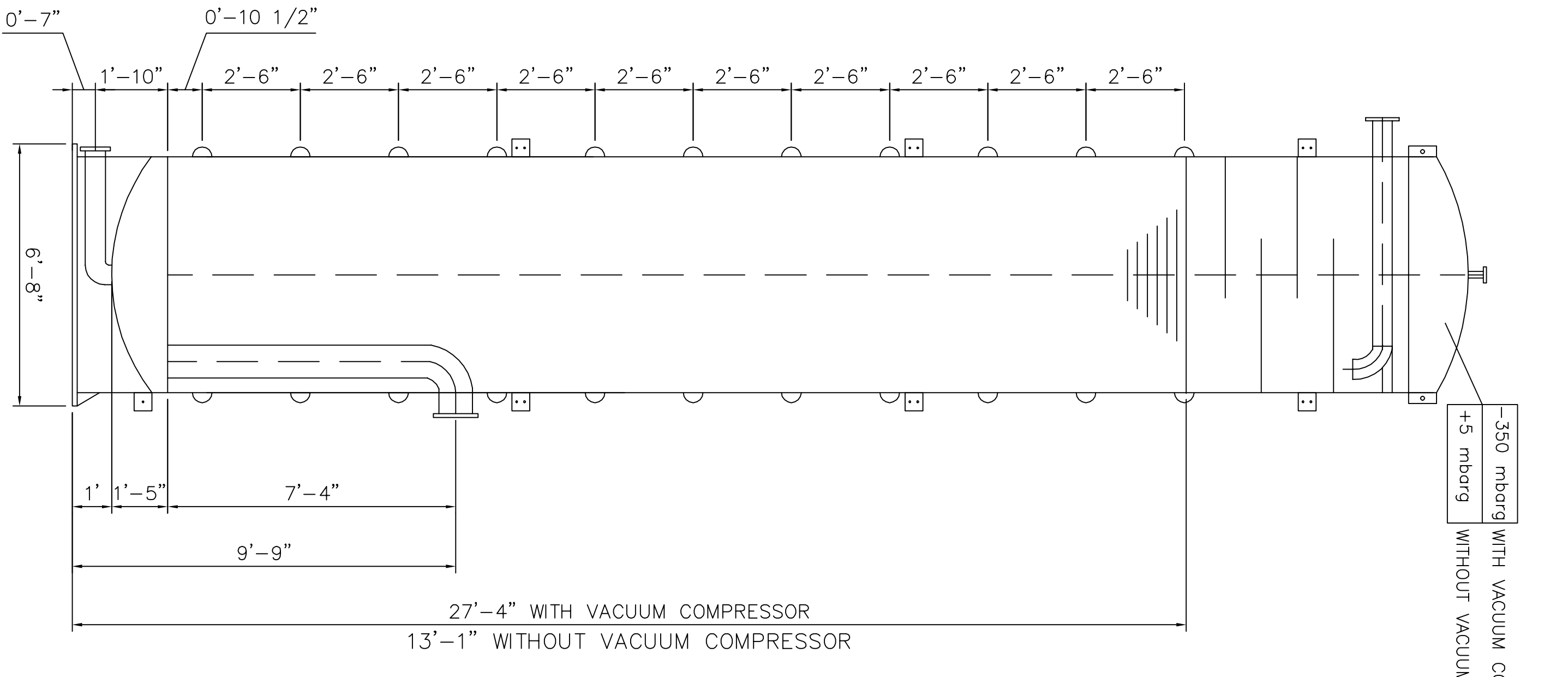


SECTION 1-1



- NOTES:
- 1)
 - 2)
 - 3)
 - 4)

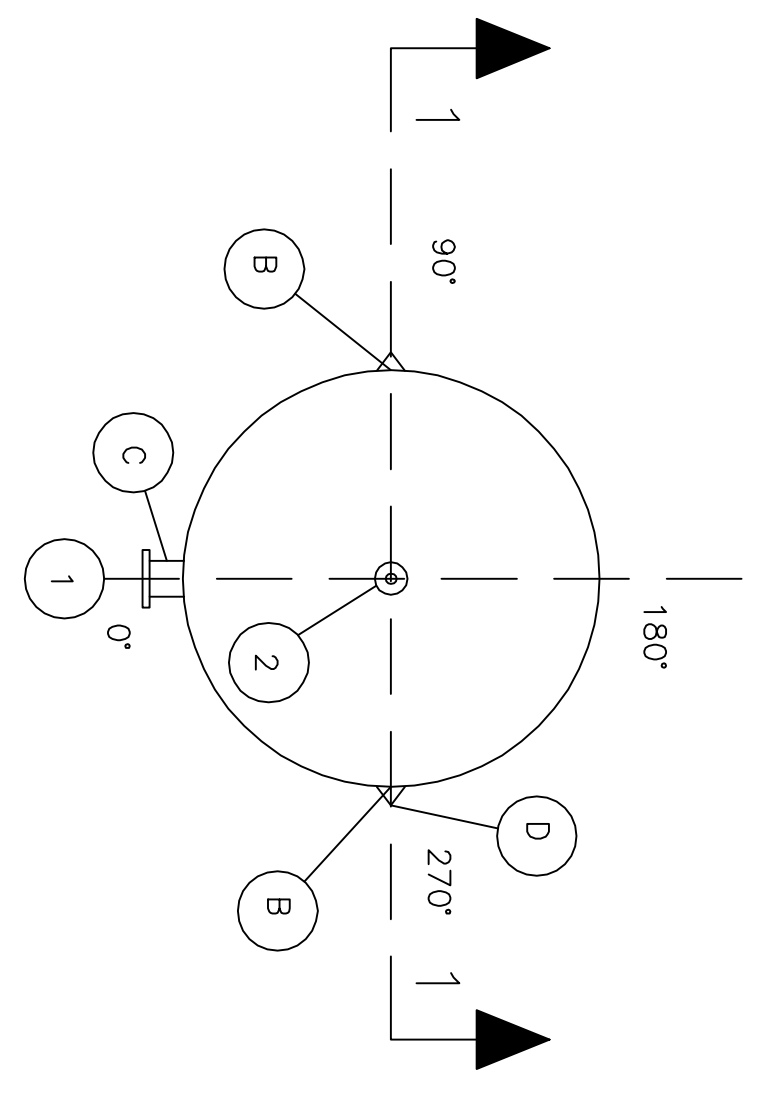
WORKING CONDITIONS



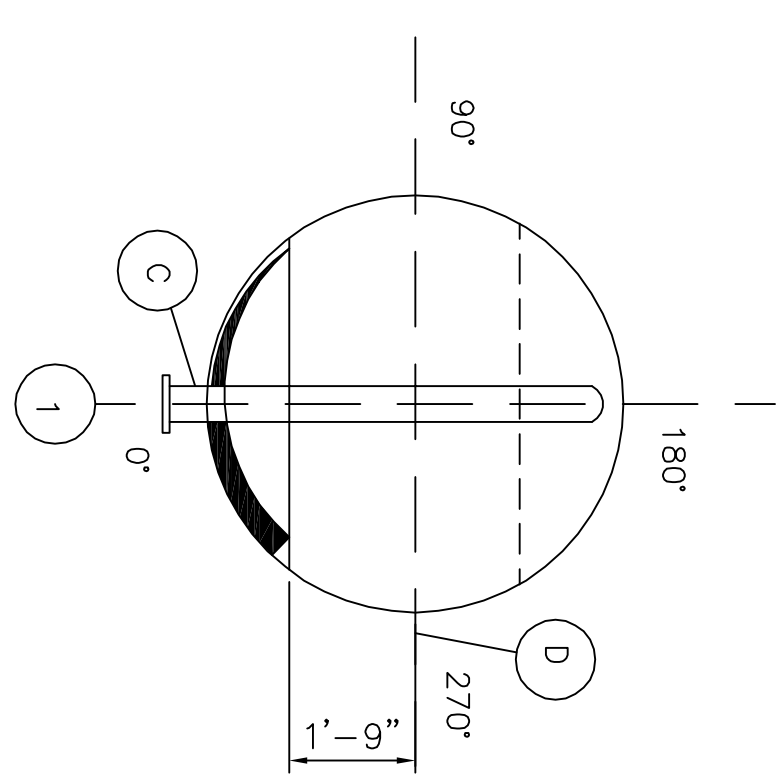
-350 mborg WITH VACUUM COMPRESSOR
+5 mborg WITHOUT VACUUM COMPRESSOR

27'-4" WITH VACUUM COMPRESSOR
13'-1" WITHOUT VACUUM COMPRESSOR

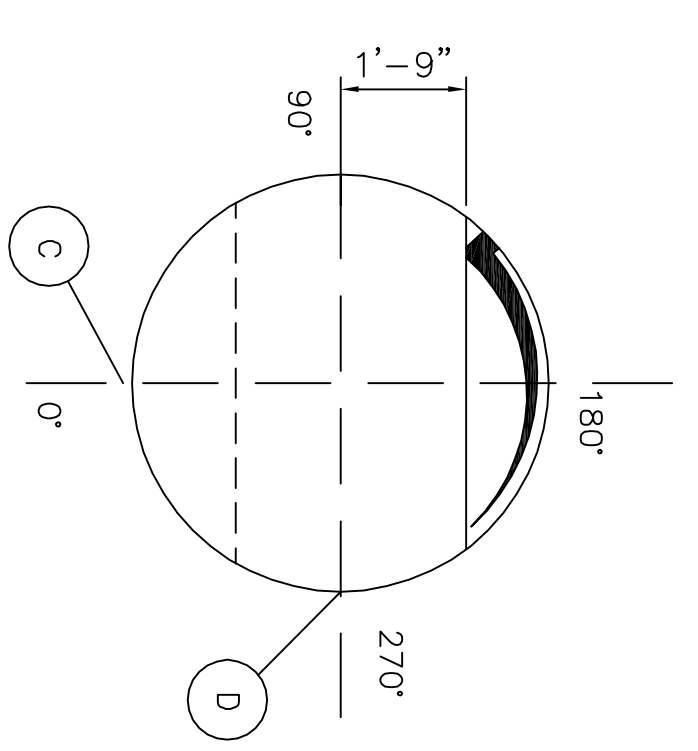
TOP VIEW



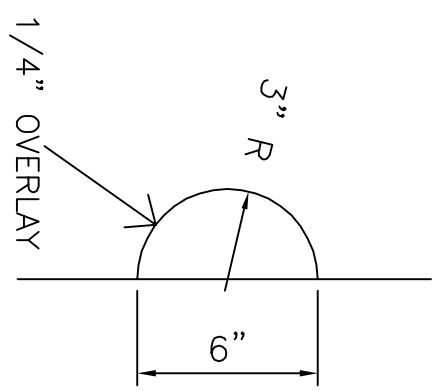
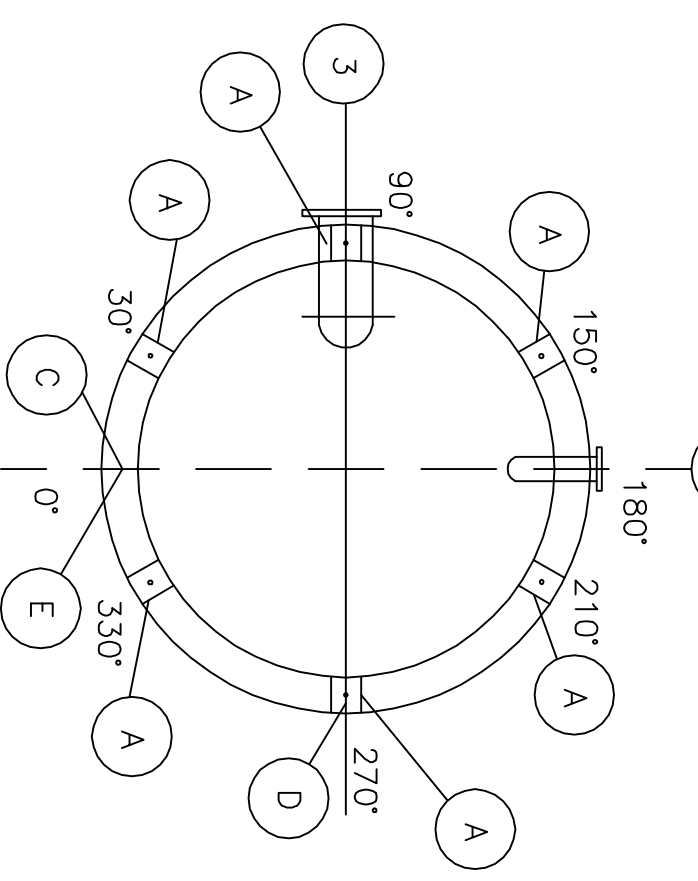
SECTION 2-2



SECTION 3-3



SECTION 4-4



HALF ROUND
STIFFENER

Nozzle/Att. Nr.	Function	Nozzle size	Flange rating	Remarks	Number
1	Inlet	6"	150#		1
2	Biogas outlet	2"	150#		1
3	Outlet to seppiflocs	10"	150#	With elbow and pipe	1
4	Drain	3"	150#	With elbow and pipe	1
A	Anchor lugs	-	-		6
B	Lifting lugs (top)	-	-		2
C	Supporting clips	-	-		3
D	Supporting clips	-	-		3
E	Lifting lug (bottom)	-	-		1
F	Half round stiffener	-	-		11