

1ST FLOOR PLAN

1/4"=1'-0"

WINDOW SCHEDULE

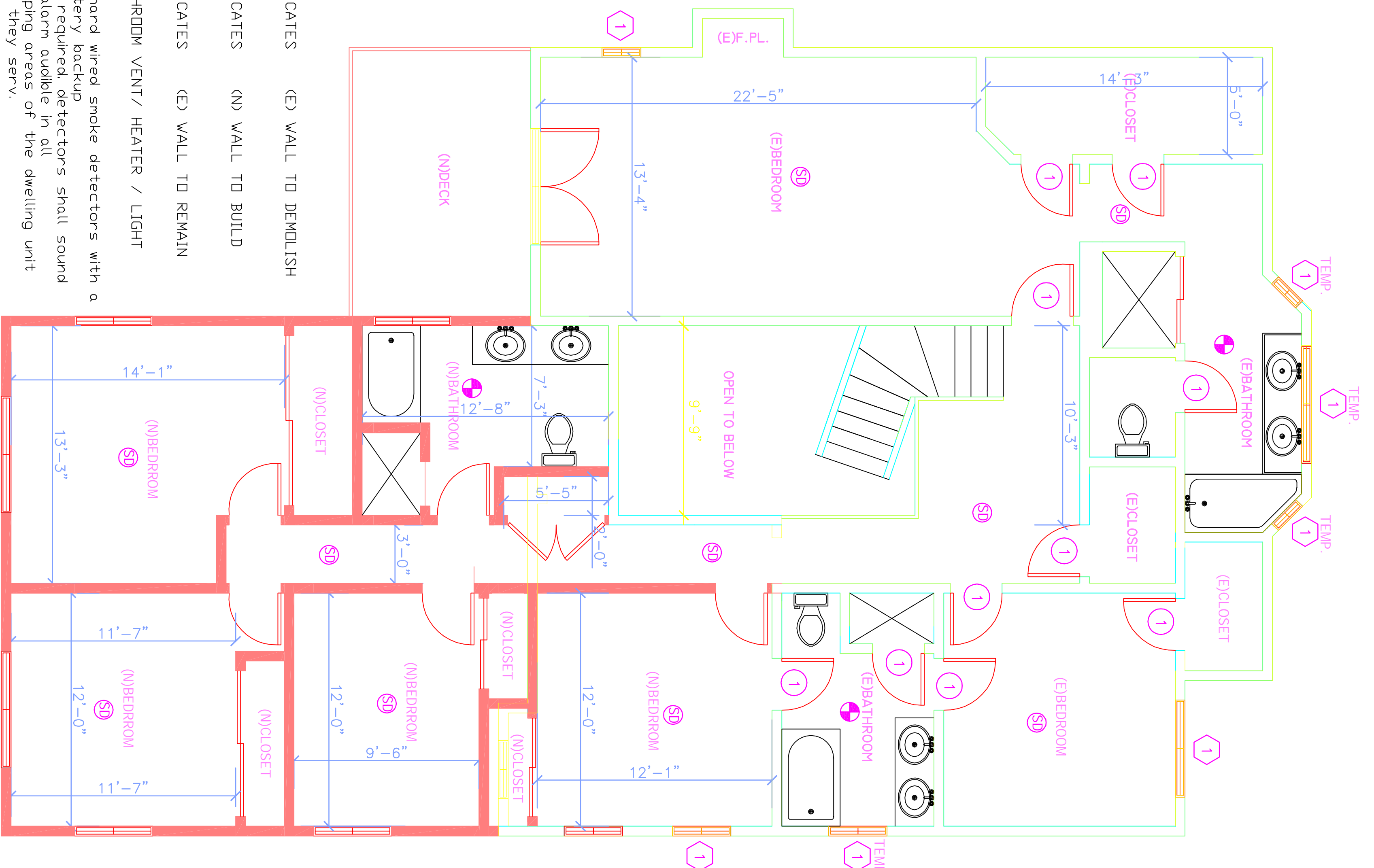
- 1 EXISTING WINDOW TO REMAIN
- 2 4'X3' NEW WINDOW
- 3 4'X4' NEW WINDOW

DOOR SCHEDULE

- 1 EXISTING DOOR
- 2 6'X6'-8" SLD. DOOR

GENERAL NOTES

- 30" CLEAR WIDTH FOR WATER CLOSET TO COMPARTMENT AND 24" CLEARANCE IN FRONT FOR BATHROOM.
- GLAZING LOCATIONS IN HAZARDOUS LOCATIONS SHALL BE TEMPERED.
- GROUND-FAULT CIRCUIT-INTERRUPTERS (GFI) PROTECTION FOR ALL 125V, SINGLE PHASE, 15 & 20 AMP BATHROOM AND OUTDOOR RECEPTACLES.
- ALL OUTLETS IN BEDROOM SHALL BE PROVIDED WITH ARC-FAULT CIRCUIT INTERRUPTER.
- WATER HEATER MUST BE STRAPPED TO WALL.
- PROVIDE ULTRA FLUSH WATER CLOSET FOR ALL NEW CONSTRUCTION. EXISTING SHOWERHEADS AND TOILETS MUST BE ADAPTED FOR LOW WATER CONSUMPTION.
- PROVIDE 70" HIGH NON-ABSORBENT WALL ADJACENT TO SHOWER AND APPROVED SHATTER-RESISTANT MATERIALS FOR SHOWER ENCLOSURE.
- AN APPROVED SEISMIC GAS SHUTOFF VALVE WILL BE INSTALLED ON THE FULL GAS LINE ON THE DOWNSTREAM SIDE OF THE UTILITY METER AND BE RIGIDLY CONNECTED TO THE EXTERIOR OF THE BUILDING OF STRUCTURE CONTAINING THE FUEL GAS PIPING.
- NEW BEDROOM SHALL HAVE EMERGENCY ESCAPE WINDOW OR EXTERIOR DOOR APPROVED FOR EMERGENCY ESCAPE. ALL EMERGENCY ESCAPE WINDOWS SHALL HAVE A MINIMUM NET OPENING OF 57 SQUARE FEET/MINIMUM NET CLEAR HEIGHT OF 24" AND WIDTH 20". THE SILL HEIGHT OF EMERGENCY ESCAPE WINDOWS SHALL NOT BE MORE THAN 44" ABOVE THE INTERIOR FLOOR.



2ND FLOOR PLAN

1/4"=1'-0"

- INDICATES (E) WALL TO DEMOLISH
- INDICATES (N) WALL TO BUILD
- INDICATES (E) WALL TO REMAIN
- BATHROOM VENT/ HEATER / LIGHT
- SD hard wired smoke detectors with a battery backup are required, detectors shall sound an alarm audible in all sleeping areas of the dwelling unit with they serv.

ADDITION FOR:

DATE	
SCALE	
DRAWN	
CHECK	
SHEET	